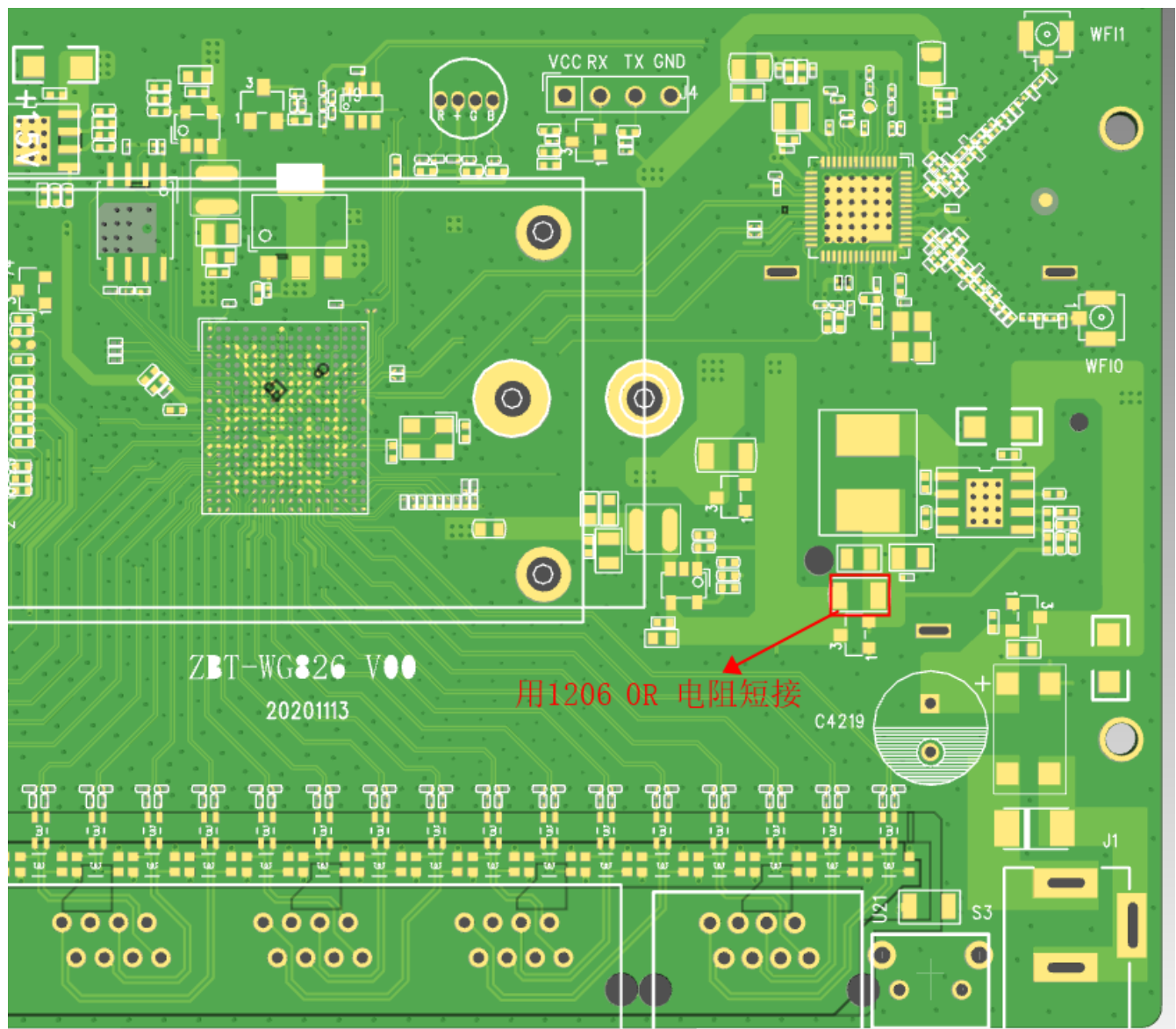


## Flashing WG827

The WG827 needs to a jumper added to the board and one removed before ROOter will work with it. As it appears that there is no Recovery GUI on this router flashing to ROOter without modifying these jumpers will cause a brick. The same with flashing back to the factory firmware from ROOter. That will also cause a brick.

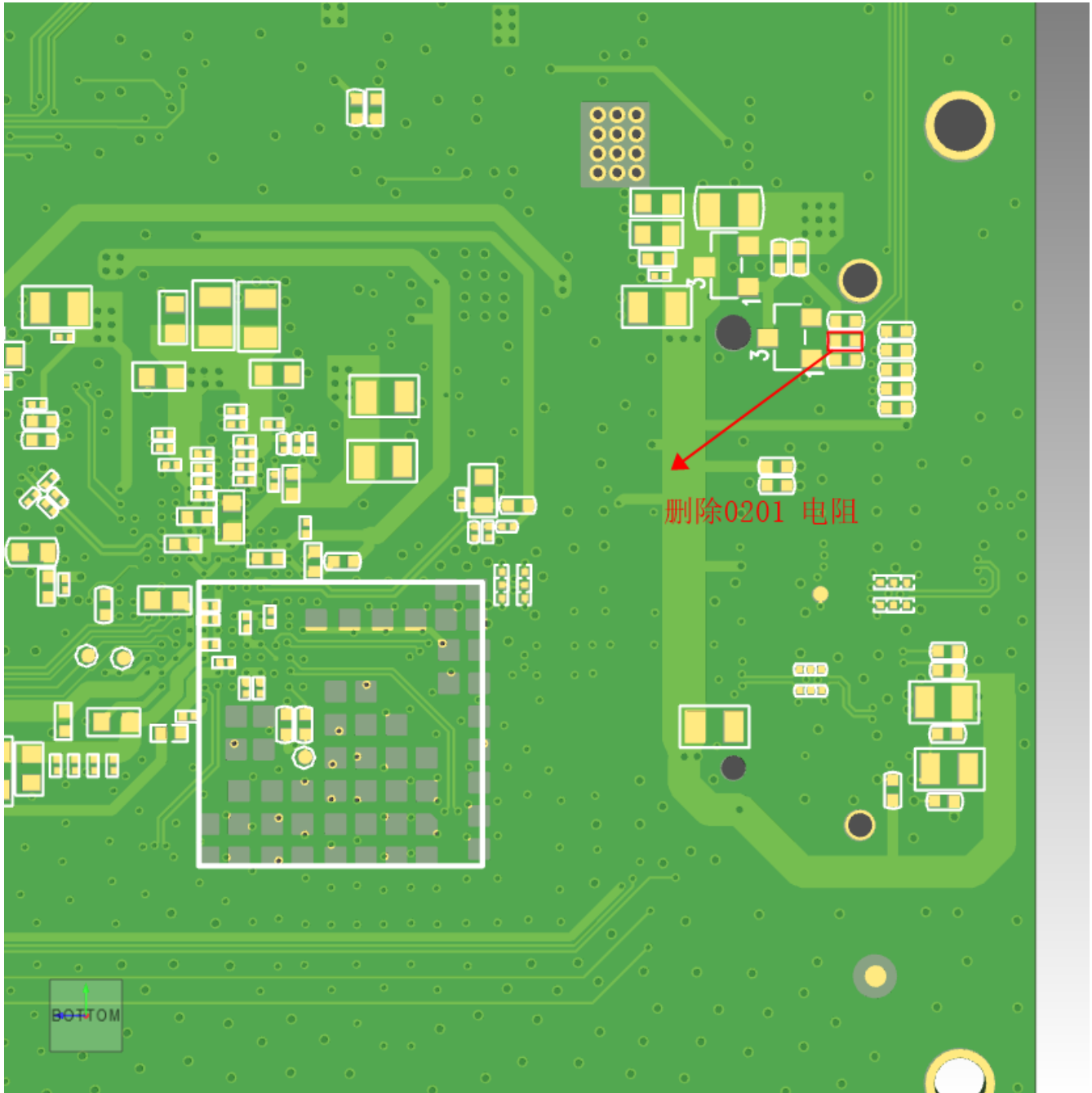
The two jumpers involved are used to disable the hardware watchdog so the router will not keep rebooting about one a minute when running ROOter. One jumper is on the top of the board and the other on the bottom.

The jumper to be added is on top of the board right behind the power plug.



The power plug is in the lower right corner. Just bridge the 2 pads with solder.

The jump to be removed is on the bottom of the board.



Remove the jumper between the pads. Once this is done you can flash ROOter and have a working router.