

Flash EM350 to 29.23.06

Disconnect the modem from your computer

Unzip flash package and go into the *SP_Flash_Tool_v6.2124_Win* folder.

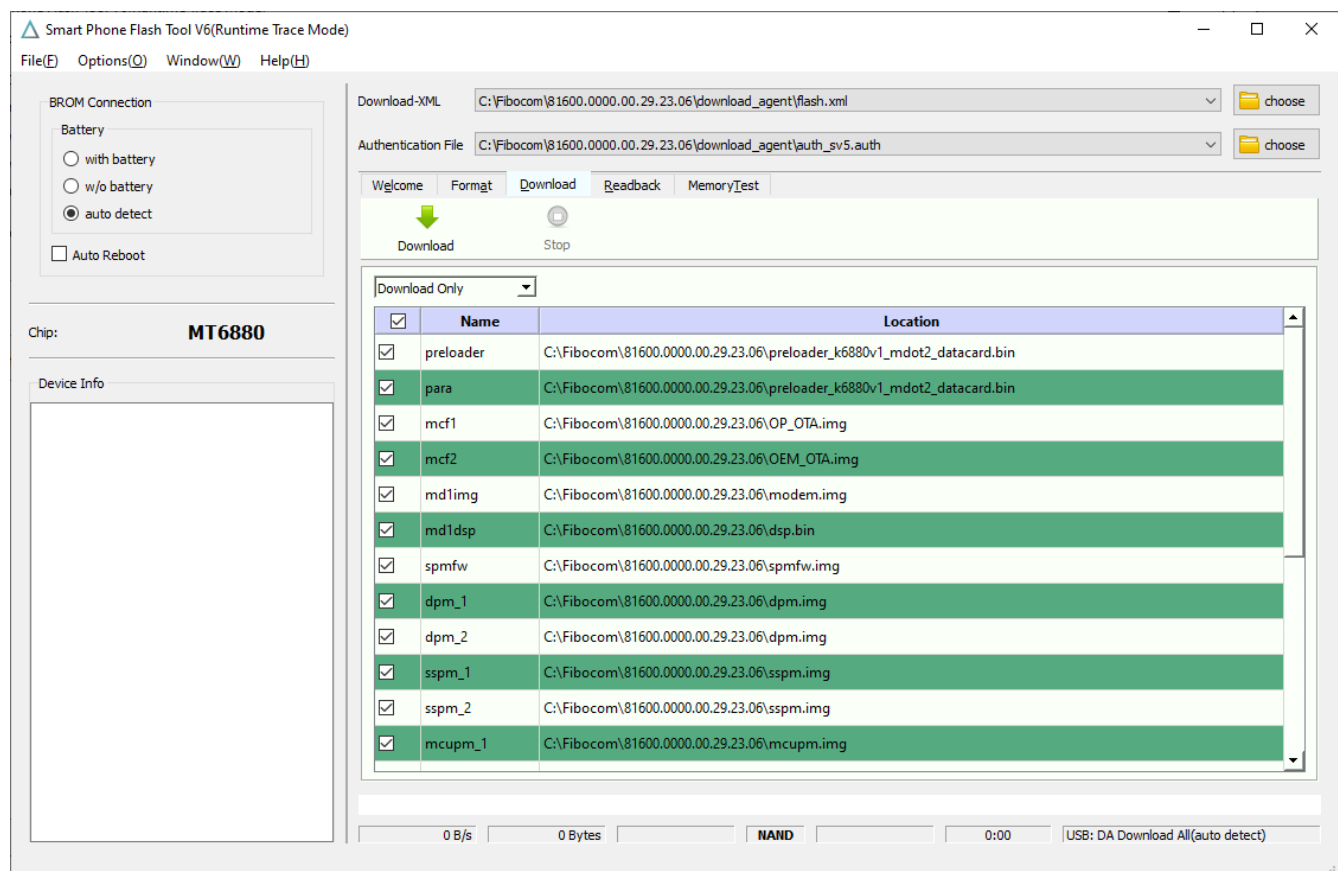
Run *SPFlashToolV6.exe*

Click *Download* tab and choose from *`download_agent`* folder in the *81600.0000.00.29.23.06* folder.

Download-XML is *`flash.xml`*
Authentication File is *`auth_sv5.auth`*

Set to *****Download Only***** mode

Click the *Download* button



Connect the modem to your computer and the upgrade process should begin